
NATIONAL MERINO CHALLENGE

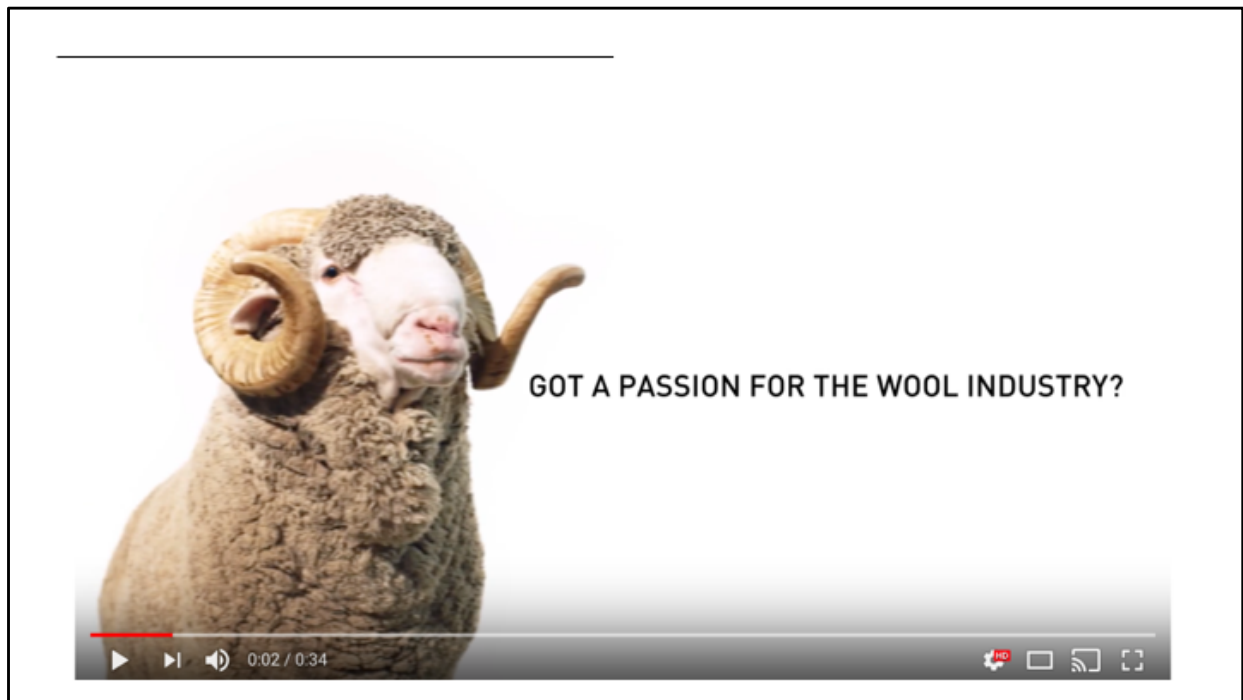
2019 NMC- SYDNEY

SATURDAY, 25 & SUNDAY, 26 MAY



N A T I O N A L
M E R I N O C H A L L E N G E





PLAY VIDEO or go to: https://www.youtube.com/watch?time_continue=31&v=5Wzww3PeSqA

NATIONAL MERINO CHALLENGE

- TWO-DAY NATIONAL COMPETITION
- TWO SECTIONS: LATE SECONDARY | TERTIARY
- TRAIN THE TRAINER
- PRESENTATIONS AND DEMONSTRATIONS
- 'MINI-CHALLENGES' TESTING KNOWLEDGE OF:
 - MERINO FLEECE
 - PRODUCTION
 - BREEDING
 - SELECTION
- BUILDS ON EXISTING INITIATIVES AND TOOLS:
 - MERINOSELECT
 - LIFETIME WOOL
 - BREDWELL FEDWELL
 - VISUAL SHEEP SCORES



The NMC is an Australian Wool Innovation (AWI) initiative designed to allow young people to engage with the Merino industry by developing their knowledge, skills and networks, and involves presentations and demonstrations from industry professionals. Students participate in seven 'mini-challenges' over two days, testing their knowledge of Merino fleece, production, breeding and selection.

Techniques from several well-known industry initiatives, such as MERINOSELECT, Lifetime Wool, Bredwell Fedwell and Visual Sheep Scores, are used throughout the NMC, giving students a realistic and practical insight into the tools available to growers to make more informed decisions.

The Challenge has two sections – late secondary and tertiary – and is open to years 11 and 12 and tertiary students, Australia-wide. The tertiary sector includes university students and those studying through TAFE or another RTO.

The NMC provides teachers with materials and techniques to prepare their students for the Challenge, as well as providing the students with materials they can use to get ready for the NMC.

Students can choose to do as much or as little work in the lead up to the NMC as they like. Materials are provided to all participants and their teachers to create a more even playing field.

The 2019 NMC will be held at Sydney Showgrounds on Saturday, 25 and Sunday, 26 May 2018. Students are to attend the two-day competition, which incorporates an industry dinner to allow them to meet key industry figures and have a bit of fun!

NATIONAL MERINO CHALLENGE

REGIONAL TRAINING DAY | EARLY MAY

MIDLANDS TASMANIA | TBC

- ONE-DAY TRAINING DAY
- HANDS-ON | ON-FARM
- PRACTICE KEY SKILLS WITH INDUSTRY SUPPORT
- TAKE HOME SUPPORTING RESOURCES



A hands-on one-day workshop will be held during early May, near Ross (location to be confirmed).

National Merino Challenge State Champions Anna Cotton and Catriona Nicholls, supported by Evelyn Archer, TAS TAFE and Stewart Raine, Roberts Ltd will take students and lecturers through key elements of the NMC challenges.

The workshop is free. Lunch will be provided. Resources also will be provided on the day for students and lecturers to take home.

NATIONAL MERINO CHALLENGE

REGIONAL TRAINING DAY | AGENDA

8:30AM | ARRIVE

9:30AM | WOOL QUALITY ACTIVITIES:

- AWEX TYPING
- WOOL VALUING

10:00AM | MORNING TEA (PROVIDED)

10:25AM | NUTRITION AND CONDITION SCORING

- OVERVIEW
- HANDS-ON ACTIVITIES

12:15PM | LUNCH (PROVIDED)

12:50PM | ANIMAL SELECTION

- RAM SELECTION USING ALL AVAILABLE DATA
- EWE SELECTION FOCUS ON VISUAL SCORES

3:00PM | WHERE TO FROM HERE (Q&A)

3:30PM DEPART



A hands-on one-day workshop will be held near Ross (Location to be confirmed).

The workshop is free. Resources also will be provided on the day for students and lecturers to take home.

2019 NATIONAL MERINO CHALLENGE

TRAVEL BURSARY PROGRAM

- UP TO THE VALUE OF 50% OF TRAVEL COSTS (MAX. \$400 P.P)
- REGISTER AND PAY FOR NMC
- BOOK FLIGHTS AND ATTACH RECEIPT TO APPLICATION FORM
- DOWNLOAD FORM FROM: NMC.COM.AU
- ACCOMMODATION DEALS ON NMC WEBSITE



All participants and trainers from Tasmania are eligible for a travel bursary.

To receive the bursary you must:

- You must register and pay for the 2019 NMC.
- You must have booked your flights and attach the receipt.
- Bursaries will be awarded up to the value of 50% of your travel costs, to a maximum of \$400.
- Download form nmc.com.au
- Accommodation details on the website: <http://www.awinmc.com.au/>

OTHER EDUCATION AND LEADERSHIP OPPORTUNITIES

- AUSTRALIAN WOOL EDUCATION TRUST
- BREEDING LEADERSHIP
- AUSTRALIAN RURAL LEADERSHIP PROGRAM
- NUFFIELD FARMING SCHOLARSHIP
- SCIENCE AND INNOVATION AWARDS FOR YOUNG PEOPLE IN AGRICULTURE
- YOUNG FARMING CHAMPION PROGRAM

**"I HAVE DEVELOPED A SPECIAL INTEREST IN
THE FIELD OF REMOTE MONITORING AND
APPLYING PRECISION LIVESTOCK
MANAGEMENT, AN AREA THAT WILL NO
DOUBT BE CRUCIAL IN YEARS TO COME."**

**MAX EDWARDS 2016 YOUNG FARMING
CHAMPION**



Check out Australian Wool Innovation's range of other education and leadership opportunities.

WOOLMARK LEARNING CENTRE | WOOL APPRECIATION COURSE



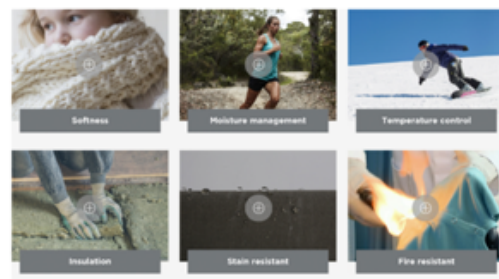
FEATURES OF WOOL

Wool is a complex fibre and its natural properties translate into a range of features, including softness, water repellence and flame resistance making it ideal for different types of products.

As we saw in Module 2: Introduction to wool, the wool fibre is made up of different components, each of which contributes to various properties, for example:

- The inner main components, the ortho-cortex and the para-cortex, make up 90% of the fibre and contribute to the fibre's crimp (curly structure), its resilience, elasticity and moisture absorption properties.
- The outer sheath, or cuticle, makes up only 10% of the fibre, but consists of a layered scaly structure, which imparts water repellence and felting (shrinkage) properties.

Select the images below to learn about just a few of these features.



Not sure you have a handle on the basics? Register you and your students to the Woolmark Learning Centre to explore the wool industry from farm to fashion. This 15 module course offers an easy-to-digest overview of the wool industry from fleece to fibre processing and into your wardrobe. Find out why wool is nature's finest fibre at <https://www.woolmarklearningcentre.com/>

NATIONAL MERINO CHALLENGE

MORE INFORMATION:

[HTTP://WWW.AWINMC.COM.AU/](http://www.awinmc.com.au/)



**N A T I O N A L
M E R I N O C H A L L E N G E**



Please RSVP to:

Cat Nicholls | cat.hot.tin.roof@bigpond.com

Anna Cotton | annacotton@hotmail.com.au